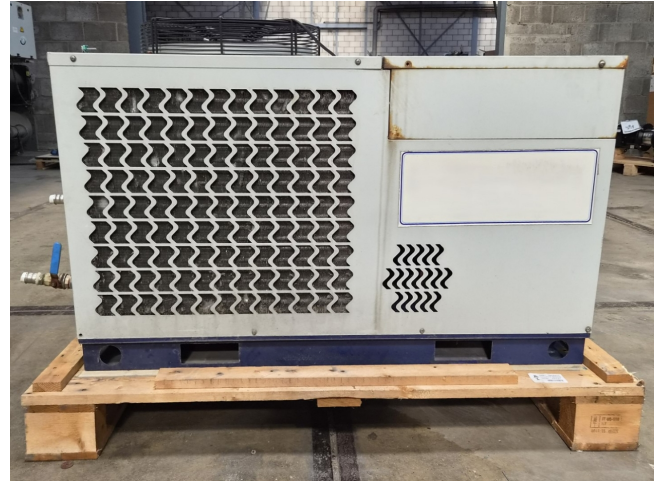


MTA TAE EVO 020

Specifications

Marka	MTA
Typ	TAE EVO 020
Typ produktu	Air Cooled Chiller
Ogólna wydajność w kW	9,5
Ogólna wydajność w	2,7
Tonaż	
Czynnik chłodzący	Freon
Typ czynnika chłodzącego	R407C
Liquid buffer tank	✓
Pump	✓
Waga kg.	142
Rozmiary	1400x560x800 mm (LxWxH)
Compressor(s) type & model	x1 Danfoss MTZ28JE4A
Display	Dixell
Number of fans	1
Fan specifications	50 Hz - 1450 RPM - 0,14 kW
Uwagi	Y.o.b. 2013
Stock	1



Description

Used MTA TAE EVO 020

Used MTA TAE EVO 020 air-cooled chiller on Freon R407C. Complete with 1 Danfoss MTZ28JE4A reciprocating compressor, condenser with 1 Ebmpapst A4D400-AP12-01 - 50/60 Hz - 1450/1690 RPM - 0,14/0,19 kW - diameter 400 mm that produces an airflow of 3.100 m³/h, Lowara CIE70/5 water pump, liquid buffer tank and a control cabinet with a Dixell display. *All components of this used chiller will be tested on adequate performance, leak free condition (condensing blocks, compressors, fans, control panel and so forth). Choosing HOSBV means buying with warranty. We perform a industrial cleaning. if requested we can arrange your shipment.

